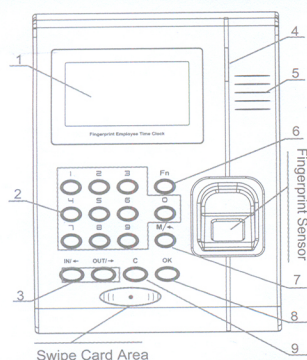


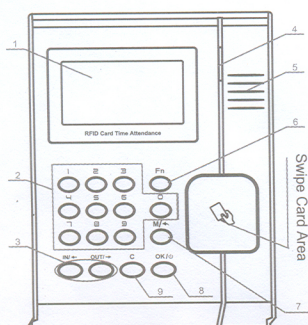
# C2/C2C Fingerprint&Card

## Product Appearance



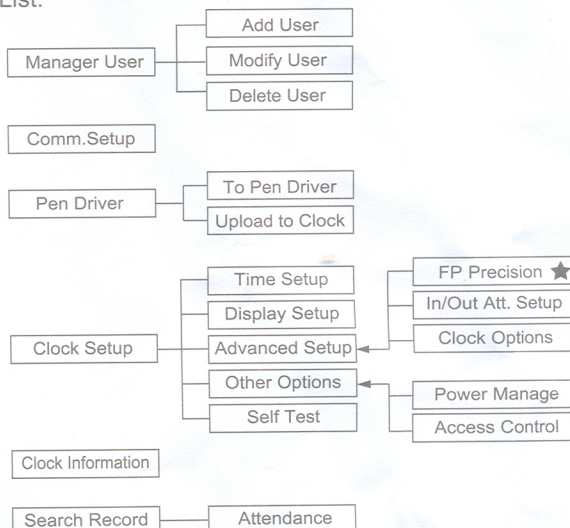
1. LCD
2. 0-9 Num.Key
3. Status Key /direction key
4. LED
5. Speaker

6. Function Key
7. Menu/Back Key
8. Confirm Key
9. Delete Key



## Menu

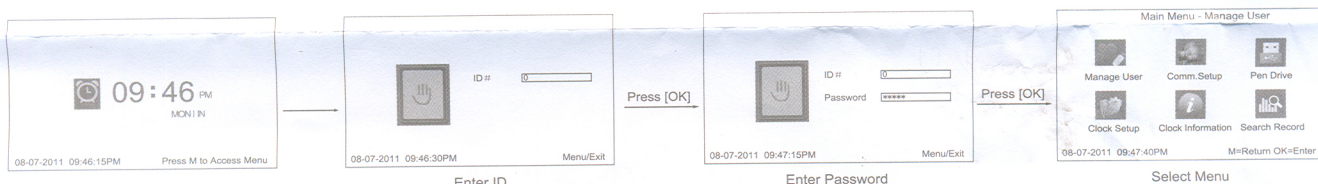
Terminal automatically power on when electricified, Input Administrator ID and Password to enter the management menu.  
Menu List:



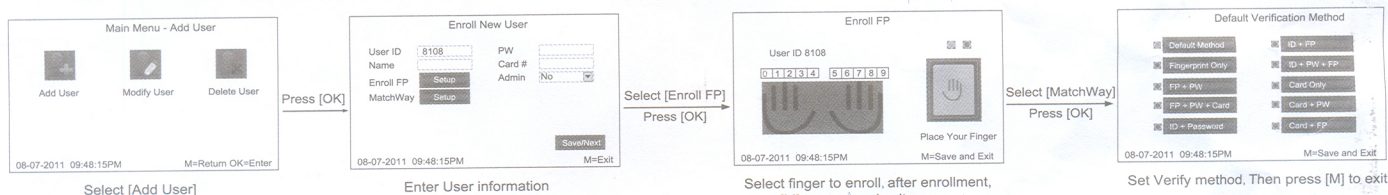
(The function with ★ mark in the menu is for the specific model unit. Please follow as actual product's menu. )

## Operation Guide

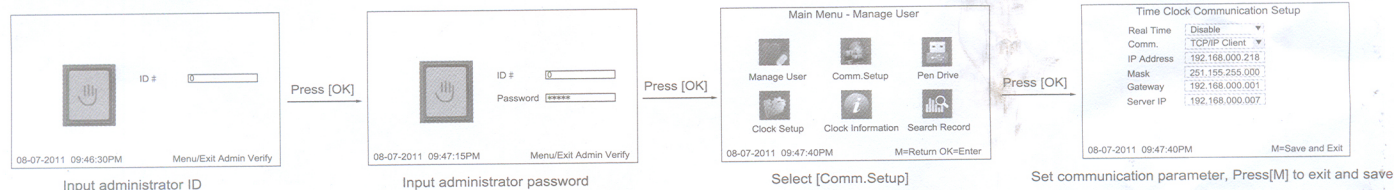
- Enter management menu: Input ID "0" and press [OK], Input default management password '12345' and press [OK] enter management menu.



- Add User: Each user can register 10 fingerprints, one password and one card. It requires place the finger twice to register one fingerprint. Add user information ( Select 【Manage User】 and press [OK] ) ★

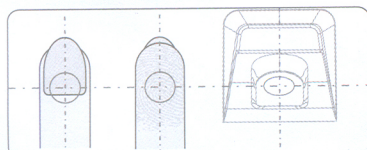


- Set Communication parameter:

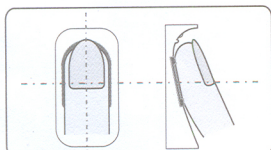


## Illustration for placing finger ★

- Correct method :

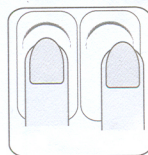


Place finger in the center of the sensor.

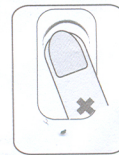


Place finger flatly and smoothly on the sensor.

- Incorrect method :



Finger not placed on the center of the sensor



Finger placed inclined



Use fingertip



## OtherSetup

### Comm.Setup

Item	Explanation	Default
Real Time	Collect the attendance record in real time from terminal in realtime. When you use Real-time monitoring function of the software you need to enable it.	Disable
Comm.	TCP/IP Server mode: Common networkmode TCP/IP Client mode: Only communicate with the PC which has server IP	ServerMode
IP Address	Set the IP address of terminal when communicate with TCP/IP. IP address must be idle fixed IP address.	192.168.000.218
Mask	Subnet Mask of the LAN	255.255.255.000
Gateway	Default Gateway of the LAN	192.168.000.001
Server IP	It is the IP address of managing PC when set TCP/IP communication. The address must be set in 'Client mode'	192.168.000.007

### To Pen Drive Setup

Item	Explanation
All Records	Download all the attendance records and create an Anviz-c folder in the root path of the U pen driver. The attendance record file named : KQ.
New Records	Download the new attendance records and create an Anviz-c folder in the root path of the U pen driver. And the new attendance record file named: NKQ.
All Users	Download all the user information and fingerprints. There are two files store in the Anviz-c folder. User information file named: YG, User fingerprint file named: ZW.
Some Users	Download designated users information.

### Time Setup

Item	Explanation
Time/Date	Set the time and date of the terminal
DST Setup	Enable/Disable daylight Saving Time. Select DST define mode: Week/Date.

### Display Setup

Item	Explanation	Default
Language	The Language of the menu	please refer to the subject product
Date Format	Setup the Date format on the LCD	YYYY-MM-DD
Time Format	Setup the Time format on the LCD	24 Hour
★ FP Image	Whether display fingerprint image when place finger.	Show

### FP Precision Setup ★

Item	Explanation	Default
1 : N	The fingerprint to be verified will be matched with all the fingerprint templates in the database automatically.	80%
1 : 1	The fingerprint to be verified will be matched with the fingerprint template of the specific user ID.	90%
AutoUpdate	In the process of verifying fingerprint, the system will replace the old low quality fingerprint template with the new high quality fingerprint template.	YES
VerifyMode	set default verify methods for terminal.	
All User Verify	Set verify methods for all users. Now all the users will be set same verifying method.	

### In/Out Attendance Setup

Item	Explanation	Default
Re-Verify Interval (0-250)	Set a period during which time the system only save the first successful record and do not save the repeated records.[0]: Disable the function; Max. value is 250 min.	0
Log Capacity Warm (0-5000)	The terminal will alarm when the memory capacity is less than the [Log Alert] value. [0]-Not alarm. Max. value 5,000.	1000
Auto In/Out Status Switch	Automatically switch the attendance status following the shift rule of the user.	

### Clock Options

Item	Explanation	Default
Volume	Set the terminal voice volume. 0-[mute], 5-[Max]: 0-5	5
Password	The password to enter management mode	12345
Device ID	Device ID of the terminal which is required in software communication	1
Reset to factory settings	The system will back to factory mode. It will delete all the data.	

### Access control ★

Item	Explanation	Default
Relay control	Select relay work mode: 'Open Door' or 'Ring Bell'	Open Door
Wiegand Mode	Wiegand26, Anviz Wiegand and Fixed Wiegand	Wiegand 26
Wiegand Area Code	If you upload one fingerprint to two terminals, the same fingerprint's wiegand outputs are different in the different terminals. If the two terminals' wiegand area codes are same, the same fingerprint's wiegand outputs are same in these two terminals.(0-254)	10
Lock Delay (0-15Sec)	Time range for the door open delay.	5

## Wiring Diagram

